

CABAS™

Smart Biometric Access Control

CABAS is a combined smart card and biometric reader, which operates in standalone mode for infinite users.

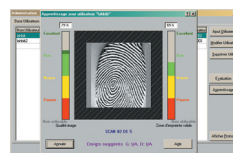
CABAS is ideally suited for use where:

- there are large numbers of users
- there are multi doors, but not linked (e.g. remote sites)
- high security access control is required

By combining the convenience of Biometrics with the storage capability of a smart card, the CABAS is able to provide fast and accurate verification of a user. With the user details being stored on the smart card, the dependance of intelligence in the reader is reduced and therefore the system is extremely cost effective.

Programming is via the PCMB, a package which includes a fingerprint scanner (USB), smart card programmer and software. The PCMB provides comprehensive and easy to use programming, and is suitable for multi-sites.

The fingerprint template and user details are stored on either a smart card or smart tag. This innovative method of data storage and retrieval, means that security is maintained at a high level while initial and operating costs are minimal.



Technical specification

Reader

Construction	Aluminium housing
Voltage	12Vac/dc
Current	300mA active
Dimensions	200 x 118 x 15mm flush
Temperature	-20 to +70C
Rating	IP-65

Product Code

CABAS	Biometric/smart card reader
PCMB	Scanner, programmer, software
BV	Mifare smart card
BMB	Mifare smart tag