

CABAPROX Fingerprint + Mifare® Reader

The CABAPROX dual technology fingerprint and Mifare reader comes as a complete system with two enrolment units and a software. The PCMB enrolment unit is used to program the template on the contactless smart badge and the USB Scanner enrolment unit captures the template and stores it into the PC database. The LOG/CABAS software provides simple programming.

CABAPROX Fingerprint + Mifare® Reader



The CABAPROX unit is dual technology reader, which combines a fingerprint and a contactless smartcard reader. The system works on a verification mode, present the badge and then sweep the finger.



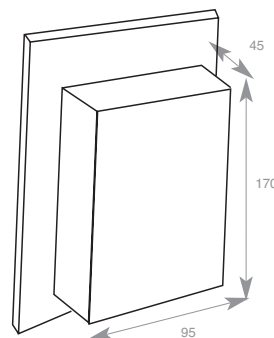
CABAPROX®

Technical Features:

■ CABAPROX has two different readers:

- A - Fingerprint reader:
 - Self cleaning sensor
 - Operates with humid fingers (choice of one or several fingerprints during recording)
 - 1 relay output N/O & N/C contacts
 - Tamper switch
 - Input voltage: 12V AC/DC
 - Optional: CABAPROX/W 26-bit wiegand output

- B - Mifare® reader:
 - High Impact reader head
 - 42MM head, 25MM body
 - Visual feedback



Code	Ref	Description
F010600009	CABAPROX	FINGERPRINT READER + MIFARE READER

LOG/CABAS Software

The LOG/CABAS software allows adding and deleting cardholders. It has also the capability to manage up to 16 CABAPROX readers and to store the cardholder access level on the contactless smart badge.

The USB SCANNER is a fingerprint desktop reader used to capture the finger templates.

The administrator can choose to login to the software:

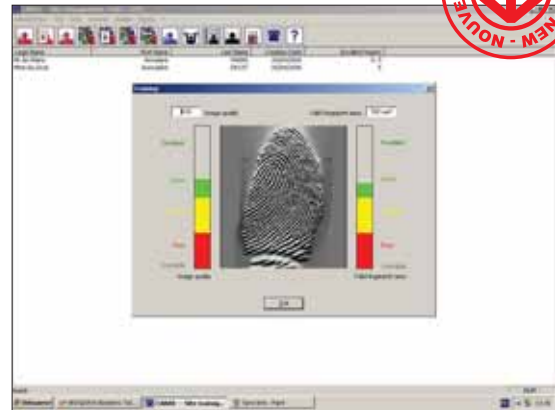
- By using the USB SCANNER,
- With a password.

Technical Features:

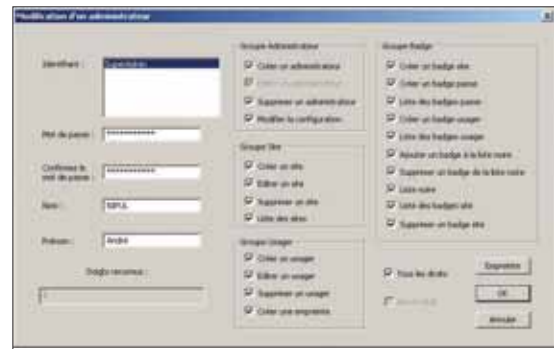
- This software allows adding and managing many sites:
 - The single door site badge. The site badge allows initialization for one known site (from 1 to 9999) and one door from 1 to 16. It also stores the black list.
 - The multi-door black list badge. It allows the initialization or update of the black list of all the doors on the same site,
 - The multi-door user badge. It allows opening one or several doors for one site only,
 - The multi-site master badge. Can open all the doors of one or several sites (maximum 24).
- The LOG/CABAS software can be used by three different type of operators:
 - The super administrator,
 - Administrators,
 - Users.
- Each operator held this information:
 - Identification number
 - Cardholder
 - Last name
 - First name
 - Template(s) stored on the contactless smart badge
- The super administrator and the administrators have the rights to issue user badges, master badges and site badges.

Recommendation:

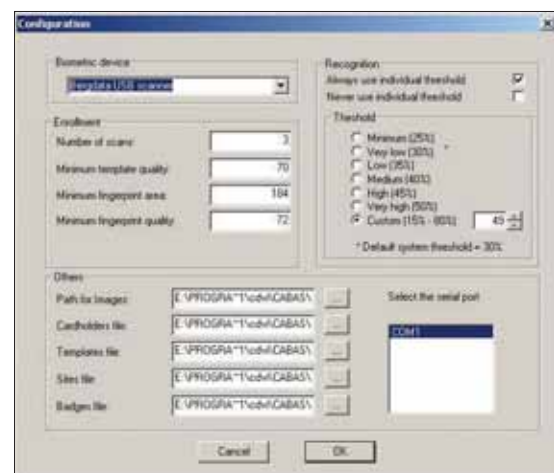
- The CONV232USB USB interface can be used in case there are no Comm. Port on the PC.



LOG/CABAS: "Fingerprint Enrolment" Window



LOG/CABAS: "Administrator" Window



LOG/CABAS: "Configuration" Window

€€

Code	Ref	Description
F0106000060	CONV232USB	USB - RS232 interface

PCMB Handheld Programming Unit

The PCMB MIFARE® badge enrolment unit is a “take-on” reader to assist in programming the template into the contactless smart badge.



Technical Features:

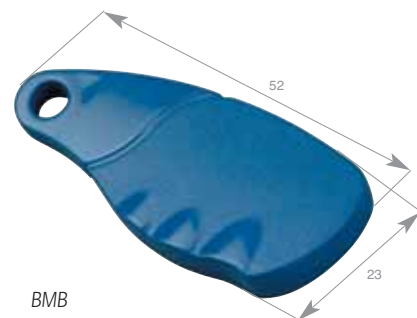
- A keyboard:
 - 10-digit membrane keypad keys.
 - Function keys. Validate, cancel, up/down and right/left buttons.
- LCD display.
- Comm. Port.
- A built-in contactless smart card reader.
- Comes with the LOG/CABAS software (see next page), the USB SCANNER reader (see page 64) and a plug-in power supply.

CE

Ⓔ - 10° C à + 70° C

Ⓘ 52

PCMB



BMB

Code	Ref	Description
F0106000011	PCMB	CABAPROX ENROLMENT UNIT
F0106000012	BMB	CABAPROX MIFARE BADGE