

XX141-00-01

**SURVEYORVFT**

**MODEL SVFT-WM WALL MOUNT FOR  
SURVEYORVFT CAMERA DOMES**



Copyright © 2004 Vicon Industries Inc. All rights reserved.  
Product specifications subject to change without notice.  
Vicon and its logo are registered trademarks of Vicon Industries Inc.

**VICON INDUSTRIES INC., 89 ARKAY DRIVE, HAUPPAUGE, NEW YORK 11788  
TEL: 631-952-CCTV (2288) FAX: 631-951-CCTV (2288) TOLL FREE: 800-645-9116  
24-Hour Technical Support: 800-34-VICON (800-348-4266)  
UK: +44 (0) 1489 566300 WEB: www.vicon-cctv.com**

# Installation & Operation Manual







Dear Valued Customer:

Thank you for selecting Vicon systems and products for your video needs.

Since Vicon's beginning in 1967, our only business has been the design, engineering, and production of the highest quality video systems and equipment for use in a wide variety of security, safety, control, surveillance, and communication applications.

We stand behind the quality and dependability of every product with an industry leading Beneficial Use warranty.

If you are not satisfied with a Vicon product or service, I would like to know. Your complete satisfaction is the mission of every Vicon employee.

Sincerely,

A handwritten signature in black ink, appearing to read "Kenneth M. Darby". The signature is fluid and cursive, with a long horizontal stroke extending to the right.

Kenneth M. Darby  
President



# Introduction

The information in this instruction manual covers the installation of the SVFT-WM Wall Mount for the SurveyorVFT Camera Dome. This mount should only be installed by a qualified technician using approved materials and wiring practices in accordance with the National Electrical Code ANSI/NFPA 70, state, and local electrical codes. Read these instructions thoroughly before beginning an installation.

The SVFT-WM Wall Mount offers a mounting alternative for pendant configurations. This mount has only been evaluated for use with UL Listed Vicon Camera Domes. Refer to the Listed Camera Dome's manual for compatibility. The wall mount can be used for indoor applications with a small inconspicuous mounting plate for an aesthetically pleasing look; for rugged indoor or outdoor applications, a large mounting plate and weatherproof gasket is provided to form a moisture seal. In addition, the outdoor mounting plate provides a more secure installation that is less susceptible to vandalism; tamperproof mounting hardware (not included) can be used for added security. The accessory kit contains all necessary hardware for installation except mounting hardware appropriate for the mounting surface.

# Installation

---

## Unpacking and Inspection

All Vicon equipment is tested and inspected before leaving the factory. It is the carrier's responsibility to provide suitable delivery. Inspect the cartons upon delivery and, if damage is present, make detailed notes on the carrier's bill. Then, obtain the carrier agent's signature and file a damage claim as soon as possible.

Open the cartons and inspect the equipment for damage. Save the cartons and packing material. If damage is present, contact the carrier and file a damage claim immediately. If the equipment must be returned to Vicon for repair, follow the instructions in the Shipping Information Section of this manual.

---

## Installation Preparation

The SVFT-WM Wall Mount has a 1-1/2 inch (38 mm) opening in accordance with American National Standard Tapered Pipe Thread (NPT) pipe. The camera dome housing mounts to the SVFT-WM using the 1-1/2 inch NPT pipe thread in accordance with the installation manual for the camera dome.

**Note:** The standard 1-1/2 inch NPT threads referred to in this manual are in accordance with ANSI B2.1-196.

The wall mount is designed to attach to a wall or other vertical surface. Mounting plates are supplied for indoor or outdoor (or harsh indoor) environments, as well as all necessary hardware for installation except mounting hardware appropriate for the mounting surface.

Cabling for power, control, and video must be run to the installation site before the mount is installed, since it is run through the mount to the interior of the dome assembly. The recommended method for cable routing is through the cable access hole in the mounting plate that mounts to the vertical surface.

### Fastener Guidelines

This mount is designed to be attached with #10 (metric M5) bolts or lag screws for both the outdoor bracket and the indoor bracket. Bolts should extend through the structure with nuts and washers used on the opposite side. Studs should be either anchored in concrete or welded to steel. If the mount is to be attached to a blind structure, make certain that the fasteners used have a minimum pull-out strength of 1500 pounds (680 kg) each and are locked with washers. Never use lag screws in the end grain of wood.

1. If the surface is concrete, use #10 lag bolts, flat and lock washers (indoor or outdoor bracket) with concrete anchors.
2. If the surface is wood, use #10 bolts, nuts, flat and lock washers (indoor or outdoor bracket).
3. If the mount is to be attached to wooden beams, use #10 lag bolts not shorter than 2.0 inches (51 mm) with flat and lock washers (indoor or outdoor bracket).
4. If the mount is to be attached to steel beams or steel plate, use #10 bolts, nuts, flat and lock washers (indoor or outdoor bracket).

**Note:** Use stainless steel mounting hardware for units mounted outdoors.

---

## Indoor Installation Procedure

When installing the SVFT-WM in an indoor location, use the following procedure. Refer to Figure 1.

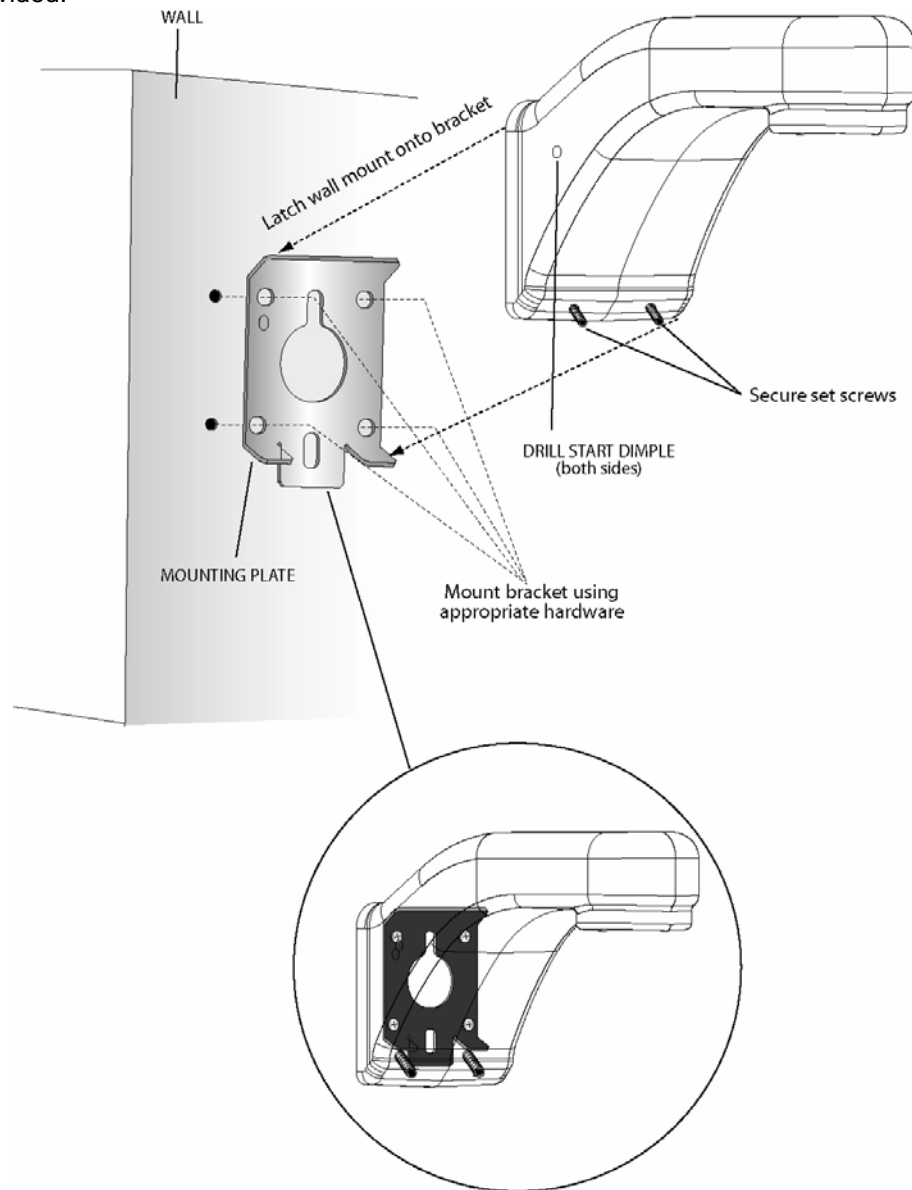
1. Select a mounting location that meets the requirements stated above for support and access. The mount weighs 1.4 pounds (0.6 kg). Refer to the appropriate Product Specifications for the other components in the system for their weights.

**⚠ Caution:** Mount this unit only to structural materials with sufficient strength to carry the overall weight of the wall mount and unit.

2. Mark the locations for drilling the mounting bolt holes and the cable access hole by using the indoor mounting plate as a template. The two ears face down. See Figure 3 for dimensions.
3. Drill passage holes for the bolts or drill pilot holes for the lag screws and cut out a hole large enough to comfortably pass the cables.
4. Pass the cables through the vertical mounting surface and the access hole in the mounting plate.

**Note:** Verify that the selected mounting location is free of obstacles such as wiring or pipes.

5. Mount the plate to the vertical surface with hardware appropriate for the mounting surface. Use #10 hardware in four (4) places minimum.
6. Feed the cables through the mount so that at least two feet of cable projects from the end of the threaded pipe. Be careful not to scrape insulation off the cables as they are passed through the mount. There are optional drill start dimples on the sides of the mount if cable cannot be routed through the vertical surface. Use these dimples to drill an alternate conduit hole in either side of the mount.
7. Latch the wall mount onto the plate so the top tab of the bracket hooks into the inside top of the wall mount and the two (2) bottom tabs are in front of the set screw holes. Tighten the two (2) set screws with the key provided.



**⚠ Caution:** Do not use this configuration in locations where vandalism may be encountered, where there are high wind loads or where excessive moisture could enter the mount and possibly damage the camera.

**Figure 1**  
**Indoor Bracket Installation**

---

## Outdoor Installation Procedure

Use the following procedure and mounting orientation indicated in Figure 2 only when installing the SVFT-WM in an outdoor location or a harsh indoor environment.

1. Select a mounting location that meets the requirements stated above for support and access. The mount weighs 1.4 pounds (0.6 kg). Refer to the appropriate Product Specifications for the other components in the system for their weights.

**⚠ Caution:** *Mount this unit only to structural materials with sufficient strength to carry the weight of the unit.*

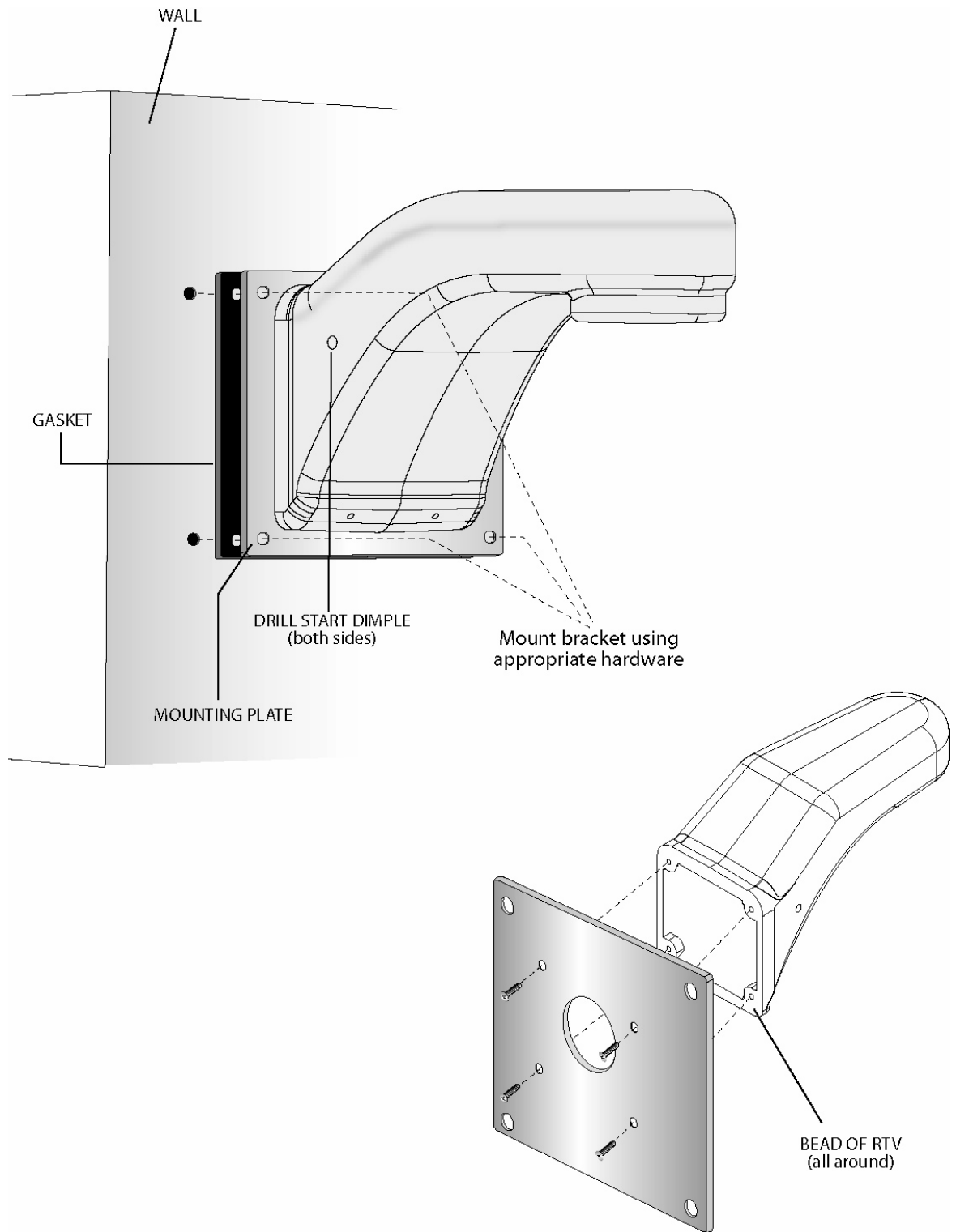
2. Mark the locations for drilling the mounting bolt holes and the cable access hole by using the outdoor mounting plate as a template. See Figure 3 for dimensions.
3. Drill passage holes for the bolts or drill pilot holes for the lag screws and cut out a hole large enough to comfortably pass the cables.
4. Pass the cables through the vertical mounting surface.

**Note:** *Verify that the selected mounting location is free of obstacles such as wiring or pipes.*

5. Put a generous layer of silicone sealant (RTV) around the flange surface of the mount to prevent water from entering the mount. Place the silicone so that a continuous perimeter seal will be made when the mount is bolted to the outdoor mounting plate.
6. Attach the outdoor mounting plate to the mounting flange of the wall mount with the four (4) flat head screws provided. Press the external sealing gasket onto the mounting plate.
7. Feed the cables through the mount so that at least two feet of cable projects from the end of the threaded pipe. Be careful not to scrape insulation off the cables as they are passed through the mount. There are optional drill start dimples on the sides of the mount if cable cannot be routed through the vertical surface. Drill hole for an appropriate conduit.
8. Line up the mounting holes and attach the mount to the supporting structure with hardware appropriate for the mounting surface. Make sure the gasket is sandwiched between the plate and the mounting surface.
9. As an added precaution, carefully seal the perimeter edge of the mount after installation with a generous layer of silicone sealant (RTV).

**Note:** *Pay particular attention that all gaps are sealed if the SVFT-WM is mounted to an irregular surface, such as a brick facade*





**Figure 2**  
**Outdoor Bracket Installation**

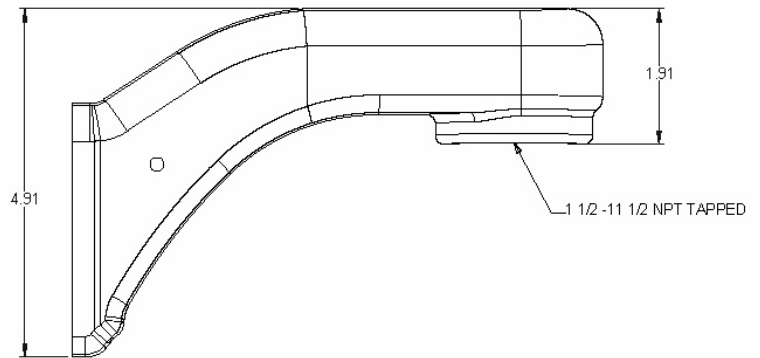
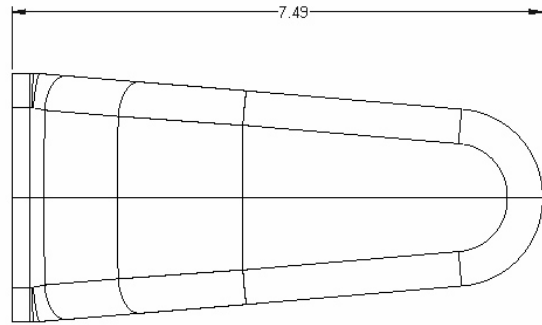
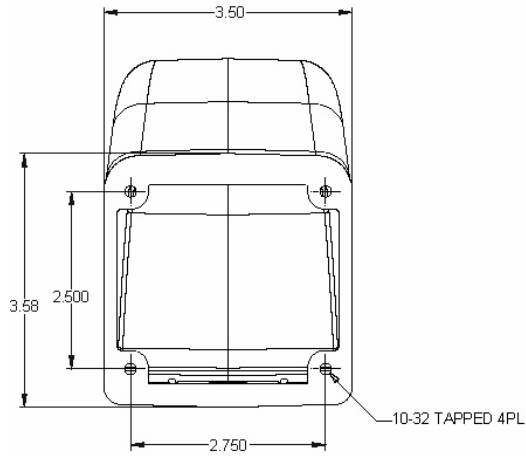
**Note:** This configuration can also be used for harsh indoor environments or in any other indoor location.

# Technical Information

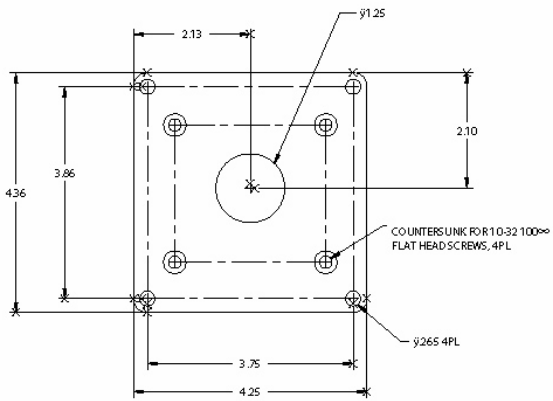
## MECHANICAL

<b>Application:</b>	Indoor or outdoor.
<b>Mounting:</b>	Wall or vertical structure.
<b>Mounting Flange Thread:</b>	Standard 1-1/2 inch NPT-F thread.
<b>Dimensions:</b>	See Figure 3. Height: 4.9 in. (124 mm). Width: 3.6 in. (91 mm). Depth: 7.4 in. (188 mm).
<b>Weight:</b>	1.4 lb (0.6 kg).
<b>Construction:</b>	Steel, stainless steel plates.
<b>Finish:</b>	Painted white.
<b>ENVIRONMENTAL (Not evaluated by UL)</b>	
<b>Storage Temperature Range:</b>	-40° to 150° F (-40° to 60° C).
<b>Storage Humidity Range:</b>	0 to 90% relative, noncondensing.

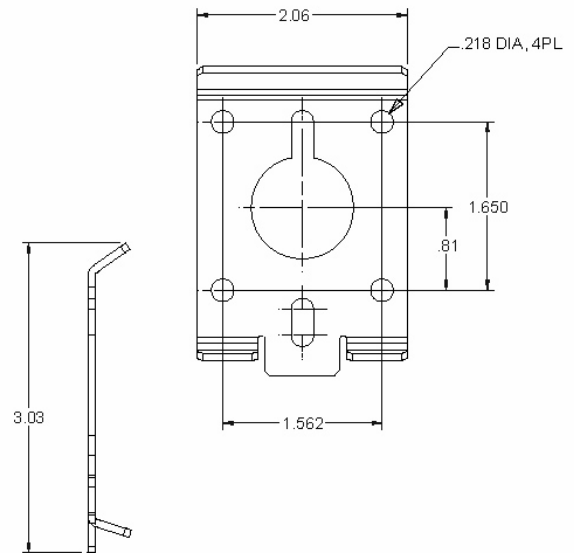
### SVFT-WM



### OUTDOOR BRACKET



### INDOOR BRACKET



**Figure 3**  
**Dimensions**

# Shipping Instructions

Use the following procedure when returning a unit to the factory:

1. Call or write Vicon for a Return Authorization (R.A.) at one of the locations listed below. Record the name of the Vicon employee who issued the R.A.

Vicon Industries Inc.  
89 Arkay Drive  
Hauppauge, NY 11788  
Phone: 631-952-CCTV (2288); Toll-Free: 1-800-645-9116; Fax: 631-951-CCTV (2288)

For service or returns from countries in Europe, contact:

Vicon Industries (U.K.) Ltd  
Brunel Way  
Fareham, PO15 5TX  
United Kingdom  
Phone: +44 (0) 1489 566300; Fax: +44 (0) 1489 566322

2. Attach a sheet of paper to the unit with the following information:
  - a. Name and address of the company returning the unit
  - b. Name of the Vicon employee who issued the R.A.
  - c. R. A. number
  - d. Brief description of the installation
  - e. Complete description of the problem and circumstances under which it occurs
  - f. Unit's original date of purchase, if still under warranty
3. Pack the unit carefully. Use the original shipping carton or its equivalent for maximum protection.
4. Mark the R.A. number on the outside of the carton on the shipping label.

## Vicon Standard Equipment Warranty

Vicon Industries Inc. (the "Company") warrants your equipment to be free from defects in material and workmanship under Normal Use from the date of original retail purchase for a period of three years, with the following exceptions:

1. VCRs, all models: Labor and video heads warranted for 120 days from date of original retail purchase. All other parts warranted for one year from date of original retail purchase.
2. Kollector Elite, Kollector Pro and ViconNet Systems (hardware only), all models: Hard Drives warranted for three years. All other parts warranted for 18 months.
3. AurorAcorD: Hard drives, floppy drives, CD-R/W, DVD drives and any and all archive media warranted for 18 months. All other parts warranted for three years from date of original retail purchase.
4. RAID Storage Devices and Hard Drives, all models: Warranted for one year from date of original retail purchase.
5. Video monitor CRT (cathode ray tube) and LCD monitors, all models: One year from date of original retail purchase.
6. NOVA 1500 CPU: Hard drives, floppy drives, CD-R/W drives and any and all archive media, warranted for 18 months. All other parts warranted for 3 years from date of original retail purchase.
7. Normal Use excludes prolonged use of lens and pan-and-tilt motors, gear heads, and gears due to continuous use of "autopan" or "tour" modes of operation. Such continuous operation is outside the scope of this warranty.

Date of retail purchase is the date original end-user takes possession of the equipment, or, at the sole discretion of the Company, the date the equipment first becomes operational by the original end-user.

The sole remedy under this Warranty is that defective equipment be repaired or (at the Company's option) replaced, at Company repair centers, provided the equipment has been authorized for return by the Company, and the return shipment is prepaid in accordance with policy.

The Company will not be obligated to repair or replace equipment showing abuse or damage, or to parts which in the judgment of the Company are not defective, or any equipment which may have been tampered with, altered, misused, or been subject to unauthorized repair.

**Software supplied either separately or in hardware is furnished on an "As Is" basis. Vicon does not warrant that such software shall be error (bug) free. Software support via telephone, if provided at no cost, may be discontinued at any time without notice at Vicon's sole discretion. Vicon reserves the right to make changes to its software in any of its products at any time and without notice.**

**This Warranty is in lieu of all other conditions and warranties express or implied as to the Goods, including any warranty of merchantability or fitness and the remedy specified in this Warranty is in lieu of all other remedies available to the Purchaser.**

No one is authorized to assume any liability on behalf of the Company, or impose any obligations on it in connection with the sale of any Goods, other than that which is specified above. In no event will the Company be liable for indirect, special, incidental, consequential, or other damages, whether arising from interrupted equipment operation, loss of data, replacement of equipment or software, costs or repairs undertaken by the Purchaser, or other causes.

This warranty applies to all sales made by the Company or its dealers and shall be governed by the laws of New York State without regard to its conflict of laws principles. This Warranty shall be enforceable against the Company only in the courts located in the State of New York.

The form of this Warranty is effective August 2, 2004.

**THE TERMS OF THIS WARRANTY APPLY ONLY TO SALES MADE WHILE THIS WARRANTY IS IN EFFECT. THIS WARRANTY SHALL BE OF NO EFFECT IF AT THE TIME OF SALE A DIFFERENT WARRANTY IS POSTED ON THE COMPANY'S WEBSITE, [WWW.VICON-CCTV.COM](http://WWW.VICON-CCTV.COM). IN THAT EVENT, THE TERMS OF THE POSTED WARRANTY SHALL APPLY EXCLUSIVELY.**

Vicon Part Number: 8006-9010-03-01 Rev 804

## **Vicon Industries Inc.**

### **Corporate Headquarters**

89 Arkay Drive  
Hauppauge, New York 11788  
631-952-CCTV (2288) 800-645-9116  
Fax: 631-951-CCTV (2288)  
&Infifax: 800-287-1207

### **Vicon Europe Headquarters**

Brunel Way  
Fareham, PO15 5TX  
United Kingdom  
+44 (0) 1489 566300  
Fax: +44 (0) 1489 566322

### **Brussels Office**

Planet II - Unit E  
Leuvensesteenweg 542  
B-1930 Zaventem  
Belgium  
+32 (2) 712 8780  
Fax: +32 (2) 712 8781

### **Far East Office**

Unit 5, 17/F, Metropole Square  
2 On Yiu Street, Shatin  
New Territories,  
Hong Kong  
(852) 2145-7118  
Fax: (852) 2145-7117

**Internet Address: [www.vicon-cctv.com](http://www.vicon-cctv.com)**

