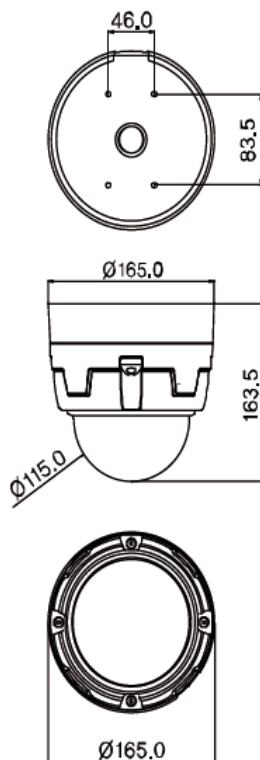




## The performance features at a glance

- Integrated Videoanalytics and motiondetection
- 100x Zoom (10x optical, 10x digital)
- H.264, MJPEG, MPEG-4 compression
- Mechanical Day-/Nightswitching
- Up to 570 TVL
- Audioin- and output
- IP66



## High versatility

Compact robustness combined with technical skill: The ZN-PTZ500VPE IP PTZ Dome with H.264 compression is suitable for indoor and for outdoor use. 570 TVL in night mode in combination with the mechanical day / night switching, it provides the best conditions for the monitoring in the dark.

## Outstanding advantages

The H.264 compression (in addition to MPEG-4 and MJPEG) provides a very low network load. Moreover, this dome has an audio input and output. As compression method used in this context is G.711.

In the highest resolution the ZN-PTZ500VPE provides 25 frames per second.

## High-performance technology

Up to 360 ° per second pan speed and up to 128 programmable presets provide a very quick visibility of the scene. 360 ° endless pan area are obvious. In addition, the ZN-PTZ500VPE has a 3.8 - 38mm lens.

## Other special features

Already integrated are various analysis functions. If necessary, these can be extended optional. Depending on the location, for example, the optional image stabilization makes sense.

## Order data

Order number	Product description
ZN-PTZ500VPE	H.264 10x PTZ dome camera, 25/30FPS@D1, Sony 1/4" Super HAD CCD True Day/Night, 500TVL(Color),570 TVL(B/W), x10 Optical/Digital Zoom, Video Analytics including Intrusion detection, Advanced VCA optional, OSD, Mirco SD, 12Vdc input, Metal Case IP66

# H.264 IP-PTZ-Dome ZN-PTZ500VPE



## Advantages for the installer

Thanks to the various properties of the ZN-PTZ500VPE is an all-rounder. Nevertheless, installation and configuration must be carried out expeditiously.

All settings can be made with the clear, Web-based configuration.

Technical specifications	ZN-PTZ500VPE
Image sensor	Sony 1/4" Super HAD CCD
Compression format	H.264, MPEG-4, MJPEG
Dualstream	Yes, configurable
Effektive Pixel	752 x 582 (PAL) / 768 x 494 (NTSC)
Resolution options	D1, 2CIF, CIF, QCIF
Horizontal lines	500 color, 570 B/w
Video framerate	25fps
Lens	3.8-38.0mm, 10x motorised zoom, 10x digital zoom
Day/night switching	Mechanically
Minimum illumination	0.7 Lux (F1.8) (50IRE) – (normal mode), 0.02 Lux (F1.8) (Sense-up) – (Nightmode)
Audioin/-output	1 / 1
Audiocodec	G.711
Network interface	10 / 100 Base-T
Protocols	TCP/IP, UDP/IP, HTTP, RTSP, RTCP, RTP/UDP, RTP/TCP, SNTP, mDNS, UPnP, SMTP, SOCK, IGMP, DHCP, FTP, DDNS, PPPoE, SSL v2/v3, IEEE 802.1X, SNMP, SSH, IPv6
Pan Angle / Speed	360° (endless), max. 360°/sec
Tilt Angle / Speed	0° ~ 90°, max. 90°/sec
Presets	128 Positions with own description
Tour	Max. 8 programmable tours
Auto Scan	Max. 8 Auto Scan
Interfaces	RS485/422, Loop-out BNC
SD-Card	Yes
Operating voltage	12VDC
Power consumption	1010mA
Protection class	IP66
Operating environment	-10°C - 60°C
Dimensions (H x Ø)	163 x 156mm
Weight	1,9kg

### Video Content Analysis included:

- Advanced Tracking Algorithmus
- Detection Zones
- Real-time Display of Tracking Data and Events
- Detect camera tampering

### Video Content Analysis optional:

- Detection of: Direction, Stopping, Enter/Exit, Tailgating, Loitering, Objectwatch
- Perspective Corrected Size and Speed Filters
- Counting Functions and Other Statistics
- Plain XML Format

**CBC (Deutschland) GmbH**  
Hansaallee 191  
D-40549 Düsseldorf  
T: +49-(0)211 53 06 70  
F: +49-(0)211 53 06 71 80  
info@cbc-de.com  
www.cbc-de.com

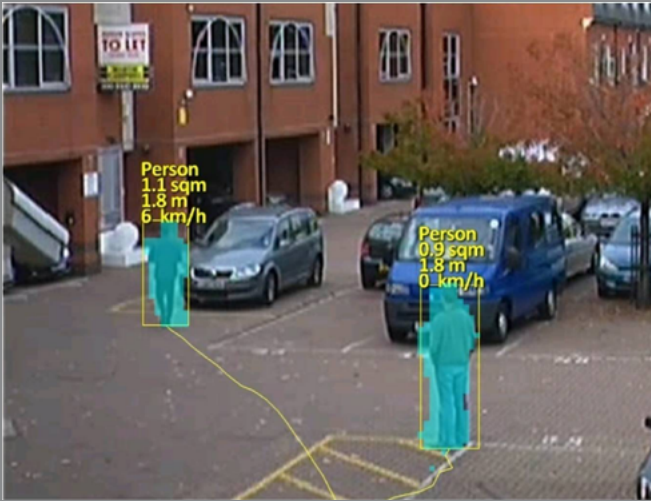
**CBC (Poland) Sp.z.o.o**  
Oddzial w Warszawie  
Ul. Krasynskiego 41A  
PL-01-755 Warsaw  
T: +48-(0)22 6 33 90 90  
F: +48-(0)22 6 33 90 60  
info@cbcpoland.pl  
www.cbcpoland.pl

**CBC Russia Moscow Rep. office**  
7, Bolshoy Strochenovskiy lane  
5th floor  
RU-115054 Moscow  
T: +7-495 7 10 88 83  
F: +7-495 7 10 88 84  
info@cbc.ru  
www.cbc.ru

**CBC (Europe) Ltd. Ufficio di Milano**  
Via E. Majorana, 2  
I-20054 Nova Milanese  
T: +39-0362 36 50 79  
F: +39-0362 4 00 12  
info@cbceurope.it  
www.cbceurope.it

**CBC CORPORATION (INDIA), PRIVATE LTD**  
2F B Wing, Marwah Centre  
Krishanlal Marwah Marg  
Andheri East, Mumbai 400 072, India  
T: +91 22 2857 9798  
F: +91 22 6649 1708  
enquiry@cbcindia.jp

**CBC (Europe) Ltd.**  
7/8 Garrick Industrial Centre  
Irving Way  
UK-NW9 6AQ London  
T: +44-(0)20 87 32 33 10  
F: +44-(0)20 82 02 33 87  
info@cbcuk.com  
www.cbceurope.com



## Intelligent algorithm:

- Tracking objects ✓
- Counting (vehicles, people) ✓
- Loitering detection ✓
- Video stabilization ✓
- Classification ✓
- Object watch ✓

## VCA - A brief description

Video Content Analysis is an active component which can analyse the content of the liveimage. It goes far beyond a simple motion detection. Our VCA has a complex algorithm which is capable of performing several tasks like counting or tracking.

## VCA - Where and why?

There are many applications where VCA comes into play. Think of counting vehicles which use a specific road. Think of a store whose owner wants to know the number of visitors. Think of detecting objects removed or put into place. Many more situations make our powerful VCA useful. Trust VCA and let it do the job it's made for.

## VCA - Complicated and expensive?

The intelligent algorithm, an user friendly setup via browser and helpful tools support you during the setup. Several analytics are already included as a standard like intruder and perimeter detection, camera shake cancellation and camera temper detection.

Optional are more analytics available as mentioned on top, like loitering detection.



Click on image for Video about VCA

## With VCA are the following GANZ-Products available:

Cameras	Decoder
ZN-Y11VPE	ZN-S100V
ZN-NH(W)11VPE	ZN-S1000VE
ZN-NH21VE	ZN-RS4012VE
ZN-D100VE	ZN-RS4040VE
ZN-D(N)T350VPE	
ZN-PTZ500VPE	