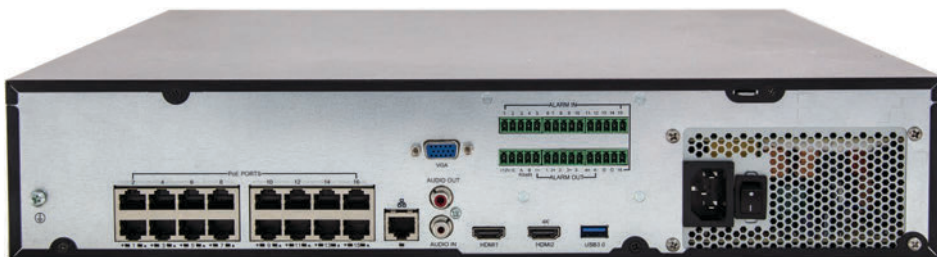




16 Channel 4K PoE NVR



UNVR304-16EP

KEY FEATURES

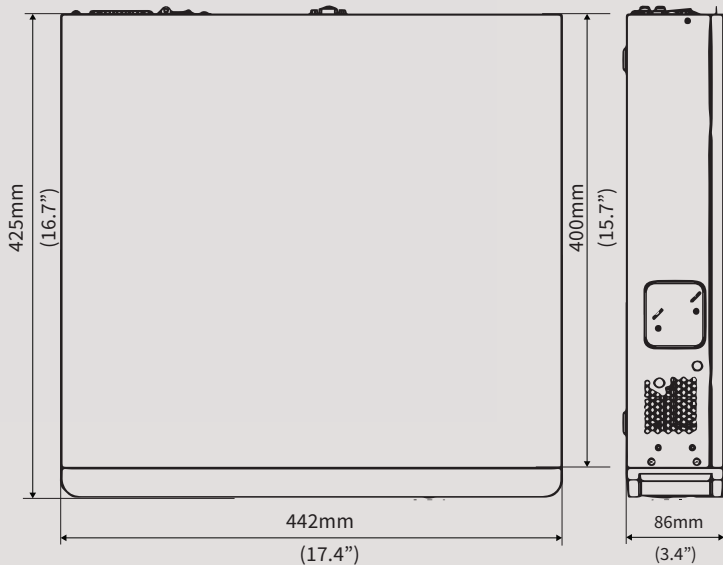
4K

Sentinel

ONVIF

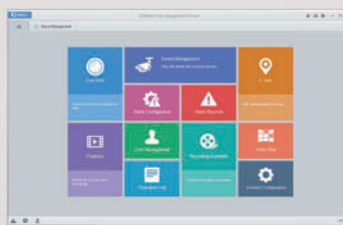
- 16 channel input
- Third-party IP cameras supported with ONVIF conformance
- Support 2-ch HDMI, 1-ch VGA, HDMI2 at up to 4K(3840x2160) resolution
- Up to 12 Megapixels resolution recording
- Support H.265/H.264 video formats
- Accurate retrieval, instant playback
- 4 SATA HDDs, Up to 8TB for each HDD
- Support various VCA detection alarm and VCA search
- Support for 12V Power output
- Plug & Play with up to 16 independent PoE network interfaces
- Support for P2P, UPnP, NTP, DHCP, PPPoE
- Support for mobile client access

DIMENSIONS



Software Interface Mobile & CMS

CMS Menu

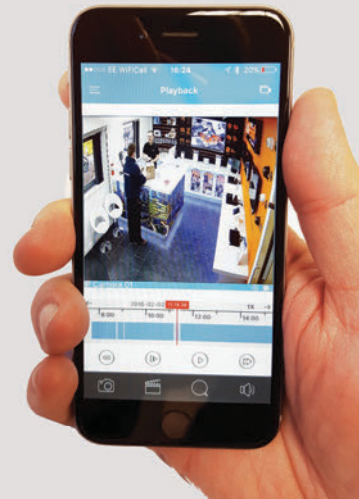


Playback



Mobile app

Playback /Live View



SPECIFICATION



Model	UNVR304-16EP
Video/Audio Input	
IP Video Input	16-ch
Two-way Audio Input	1-ch, RCA
Network	
Incoming Bandwidth	160Mbps
Outgoing Bandwidth	320Mbps
Remote Users	128
Video/Audio Output	
HDMI/VGA Output	HDMI1/VGA: 1920x1080p /60Hz, 1920x1080p /50Hz, 1600x1200 /60Hz, 1280x1024 /60Hz, 1280x720 /60Hz, 1024x768 /60Hz HDMI2: 4K (3840x2160) /60Hz, 4K (3840x2160) /30Hz, 1920x1080p /60Hz, 1920x1080p /50Hz, 1600x1200 /60Hz, 1280x1024 /60Hz, 1280x720 /60Hz, 1024x768 /60Hz
Recording Resolution	12MP/8MP/6MP/5MP/4MP/3MP/1080p/960p/720p/D1/2CIF/CIF
Audio Output	1-ch, RCA
Synchronous Playback	16-ch
Decoding	
Compression	H.265/H.264
Live view / Playback	12MP/8MP/6MP/5MP/4MP/3MP/1080p/960p/720p/D1/2CIF/CIF
Capability	4 x 12MP@20, 4 x 4K@30, 8 x 4MP@20, 16 x 1080p@25, 32 x 720p@25
Hard Disk	
SATA	4 SATA interfaces
Capacity	up to 8TB for each HDD
External Interface	
Network Interface	1 RJ-45 10M/100M/1000M self-adaptive Ethernet Interface
Serial Interface	1 x RS485
USB Interface	Front panel: 2 x USB2.0 Rear panel: 1 x USB3.0
Alarm In	16-ch
Alarm Out	4-ch
Power Output	12 VDC
PoE	
Interface	16 independent 100 Mbps PoE network interfaces
Max Power	Max 30W for single port Max 200W in total (12.5W for each)
Supported Standard	IEEE 802.3at
General	
Power Supply	100 ~ 240 VAC
Consumption (without HDD)	≤ 20 W
Working Temperature	-10°C ~ +55°C (+14°F ~ +131°F)
Working Humidity	10% ~ 90%
Dimensions	86 × 442 × 425mm (3.4" × 17.4" × 16.7")
Weight (without HDD)	≤ 5.24 Kg (11.55 lb)

“Incredible value,
incredible
performance”

