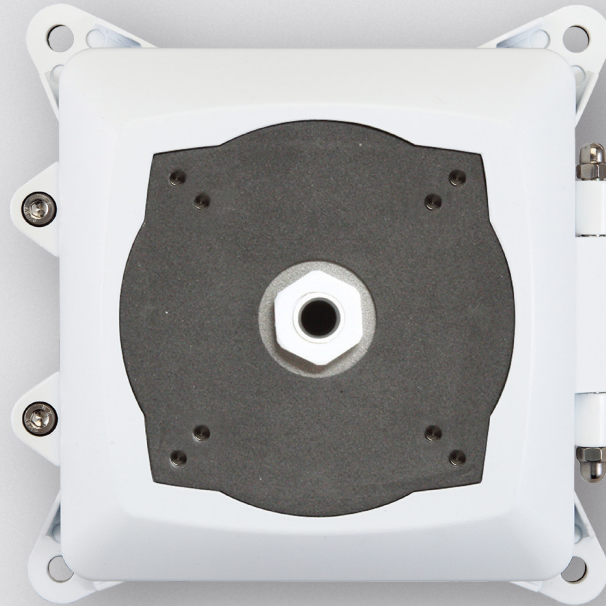


GANPRJB

JUNCTION BOX

Hinged Lid Junction Box for GANPR550IP Camera



Key Features

- For use with the GANPR550IP LPR HD camera
- Hinged to allow easy access to both cabling and cabling connections without having to de-mount the camera

PLEASE NOTE:

To prevent water ingress it is important to fit the supplied rectangular grommet to the camera bracket before attaching it to the Junction Box. Silicone sealant should be applied around the outside edges of the grommet to give a watertight seal.

The Genie **GANPRJB** junction box is designed for use with the **GANPR550IP** LPR HD camera. It provides a convenient and secure method for the camera's video and power connections.

The junction box is hinged to allow easy access to both cabling and cabling connections without having to de-mount the camera.

