

Datasheet

SEF24 Series - Flat Infrared Photocells

Product Description

Photocells from CDVI emit infrared beams. If the beam is cut or interrupted between the transmitter and the receiver, an action is triggered and the photocell activated.

Active infrared beams are ideal for protecting the active zone on swing and sliding gates and doors, preventing injury or accidental damage if a person or obstacle is within the zone. They can also be used as signalling devices where the beam is interrupted by vehicles or pedestrians, and as a guard for machinery which can be stopped automatically if a person approaches the machine.

The 5 and 10 metre flat photocells have fixed optics, and are ideal for discreet mounting.



Key Features

- Flat active infrared photocells with fixed optics
- 5m or 10m beam ranges
- Easy to install
- Double contact relay
- For internal or external use

 Certification

 DEEE

RoHS Certification

 IP55

 -10°C to 55°C

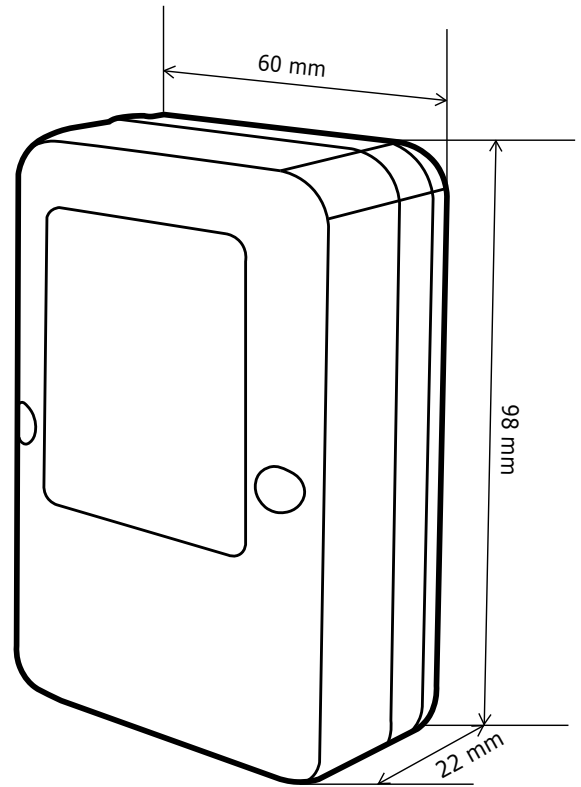
All the information contained within this document (pictures, drawings, features, dimensions, specifications), could be perceptibly different and can be changed without prior notice. Published: 03 March 2022. CDVI_SEF2405-SEF2410_DS_01_EN_A4_C

Product Specifications

Material:	Polycarbonate
Mounting:	Surface
Technology:	Infrared, SEF2405: 3.4 KHz SEF2405: 1.5 KHz
Wavelength emission:	SEF2405: 950 nm SEF2410: 880 nm
Emission with diode:	SEF2405: GaAs SEF2410: GaAlAs
Contacts:	1x NO, 1x NC

Electrical Specifications

Power supply:	12-24Vac/dc
Max DC power:	24W @ 48V
Max AC power:	60V @ 48V



Range References

F0103000095	SEF2405	Flat photocell, fixed 5m infrared beam
F0103000096	SEF2410	Flat photocell, fixed 10m infrared beam