



# GANPRKIT2

## Professional Automatic Number Plate Recognition System

The GANPRKIT2 is a professional ANPR system comprising of 2 x Full HD 1080P IP camera's, 2 x Wall Bracket, 15V DC power supply, 1 x i5 mini form factor PC pre-installed with a 2 Lane ANPR license and viewing software. The Camera's are designed to deliver superior performance capable of reading upto 6m lane width, with reading distances of 4-12m and provides a breakthrough in ANPR technology.

The compact neat enclosure has a 1080P camera and IR lighting, A remote zoom lens and electronic lighting control.

The remote control zoom lens enables the installer to adjust the camera including zoom and focus from our software, either on site or via the Internet.

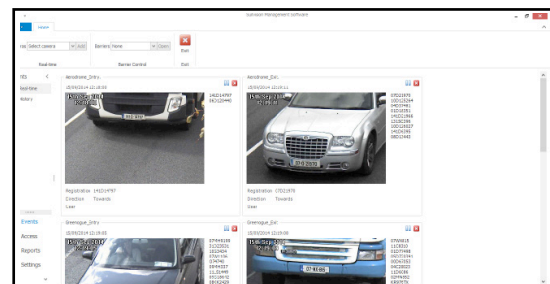
Each unit is pre-calibrated and tested for simple installation and a unique cabling and power supply system ensures no risk simple installation minimizing time spent on site.



Genie ANPR Camera



Mini Form Factor Windows PC



Software

### Key Features

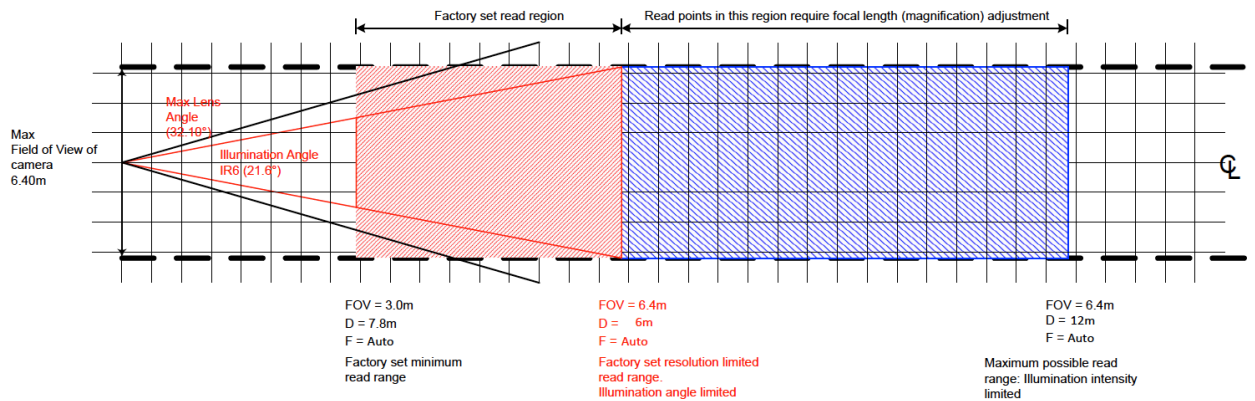
- 6 metre road width coverage, 4-12m reading range
- 2 x Full HD 1080P IP ANPR Camera
- Reading multiple number plates in a single field of view
- Superior Low Light Performance : 1/2.7" CMOS Sensor
- 15V DC Power Supply
- 7 - 22mm remote vari-focal lens for viewing distance up to 12 metres
- Simple set up using the Genie ANPR Viewing monitor - control all functions
- Optimised MJPEG streaming of the video @ 1080P
- 6 LED's to illuminate 6 metres of road width
- Standard Mounting Bracket
- 1 x i5 Mini Form factor Window based PC
- Pre-installed 2 Lane ANPR Engine and Licence
- User Friendly Client Software, can be installed on multiple PC's and support up to 3 simultaneous connections
- Simple Plug and Play with minimal setup

DATASHEET

# Technical Specification

Model Number	GANPRKIT2
LED Quantity	1 \IR Lamps
Infra Red Light Maximum Range	4-12 m
Infra Red Beam Angle	35 degrees
Power input	15V DC
Protection Level	IP66
Temper Glass Thickness	4mm
Dimension	170(L) x 70(W) x 90(H)
Net Weight	1.88 Kgs
Housing Construction	Extruded Aluminium Alloy

Genie CCTV reserves the right to change specifications without notice. Please contact your representative to confirm current specifications.



Note:  
Reading at greater range than the factory setting requires user adjustment of lens focal length (magnification). Adjustment of the lens must be such that the FOV at the read point does not exceed 6.4m.

Key:  
FOV = Horizontal field of view  
F = Lens focal length  
D = Distance from camera to read point along optical axis of camera

## Accessories

- GANPRIPRY- IP Relay for barrier control
- PSU1SM- 12VDC PSU for IP relay
- LM215- 21.5" PC monitor 1080P resolution
- IP8ESP/E- 8 Port POE Switch