



# IPWB520PTPK

## 1x Point To Point 2Km IP Bridge & Injector

The IPWB520PTPK is a universal device. Distances and throughputs will vary in all environments, but typically you can expect up to 2Km - 300 Mbps point to point. To create a multi-point solution, add the IPWB590SB.



IPWB520PTPK

### Key Features

- 5.150 - 5.850 GHz (FCC 5.150 - 5.250 and 5.725 - 5.850 GHz)
- 80,000 PPS
- 300 Mbps (Radio Speed) (10/100 LAN)
- High Output Power 29 dBm Radio
- Integrated Dual-Polarised 20 dBi Directional Antenna
- Powerful OS
- Smart Polling Data Transmission Protocol (iPoll 2)
- IP65 Rated
- Free WNMS (WNMS – Wireless Network Management System)
- Responsive HTML 5 based GUI
- Wall and Pole Mounting Supplied
- LED Signal Strength Indicator

### Accessories

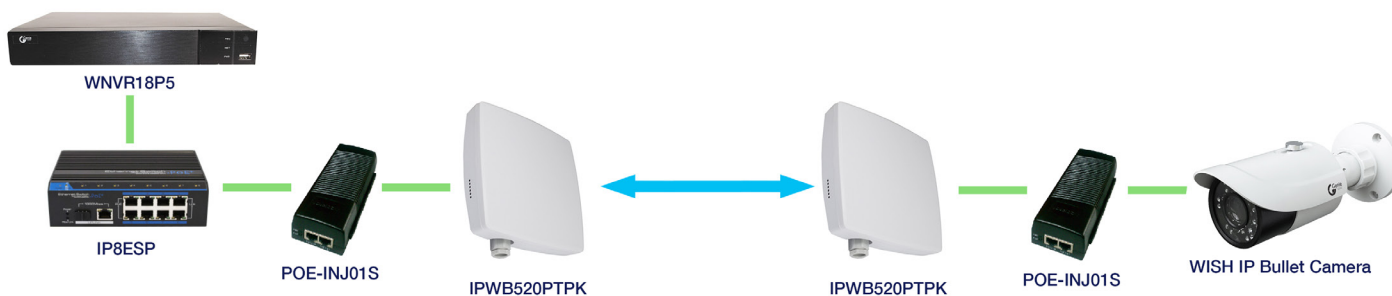


**IPWB590SB**  
2Km Access  
Multi-Point  
Receiver



**IPWBE5PTPK**  
Point to Point  
1Km IP Bridge &  
Injector

### System Drawing



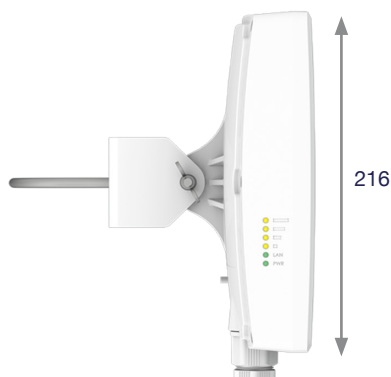


## Specification

<b>Model Number</b>	IPWB520PTPK
<b>WLAN Standard</b>	IEEE 802.11 a/n, iPoll (Proprietary)
<b>Radio Mode</b>	MIMO 2x2
<b>Radio Frequency Band</b>	5.150 - 5.850 GHz (FCC 5.150 - 5.250 and 5.725 - 5.850 GHz)
<b>Transmit Power</b>	Up to 29 dBm (Country Dependent)
<b>Receive Sensitivity</b>	Varying between -97 and -75 dBm depending on Modulation
<b>Channel Size</b>	5, 10, 20, 40 MHz
<b>Modulation Schemes</b>	802.11 a/n: OFDM (64-QAM, 16-QAM, QPSK, BPSK)
<b>Data Rates</b>	300 Mbps (Radio Speed) (10/100 LAN)
<b>Error Correction</b>	FEC, Selective ARQ
<b>Duplexing Scheme</b>	Time Division Duplex
<b>Antenna Type</b>	Integrated Dual-Polarised Directional Panel Antenna
<b>Antenna Gain</b>	20 dBi
<b>Interface</b>	100 Base-T, RJ45
<b>Wireless Operating Modes</b>	Access Point (Auto WDS), Access Point (iPoll 2), Station (WDS, iPoll 2), Station (ARP NAT)
<b>Wireless Techniques</b>	Smart Station Polling, Smart Auto-Channel, Adaptive Auto Modulation, Automatic Transmit Power Control (ATPC)
<b>Wireless Security</b>	WPA/WPA2 Personal, WPA/WPA2 Enterprise, WACL, User Isolation
<b>Wireless QoS</b>	4 Queues Prioritisation on iPoll 2
<b>Network Operating Modes</b>	Bridge, Router IPv4, Router IPv6
<b>Network Techniques</b>	Routing with and without NAT, VLAN
<b>WAN Protocols</b>	Static IP, DHCP Client, PPPoE Client
<b>Services</b>	DHCP Server, SNMP Server, NTP Client, Router Advertisement Daemon, Ping Watchdog
<b>Management</b>	HTTP(S) GUI, SSH, SNMP Read, WNMS, Telnet
<b>System Monitoring</b>	SNMP v1/2c/3 server, Syslogs, System Alerts via E-mail and SNMP Trap
<b>Power Supply</b>	DC24V Passive PoE (PoE Adapter included)
<b>Power Consumption</b>	4.5W
<b>Operating Temperature</b>	-40°C ~ +65°C
<b>Humidity</b>	0 ~ 90 % (Non-Condensing)
<b>Dimensions</b>	216 (H) x 80 (W) x 184 (L) mm
<b>Unit Weight</b>	413g

Genie Access reserves the right to change specifications without notice. Please contact your representative to confirm current specifications.

## Dimensions (mm)



Side View



Back View