

Subject to change without notice

NORBAIN SD LTD
210 Wharfedale Road
Winnersh Triangle
Wokingham
Berkshire
RG41 5TP
United Kingdom
01189 125 000

VKBD1 Installation and user manual



**Installation and user instructions for :
VKBD1 Telemetry Keyboard**



CONTENTS

CONTENTS	3.
CAUTION	4.
- ELECTROMAGNETIC COMPATIBILITY (EMC)	
- MANUFACTURER'S DECLARATION OF CONFORMANCE	
- ELECTRICAL SAFETY	
INTRODUCTION	5.
- Features	
- Before Installation	
- Packing List	
FRONT KEYBOARD LAYOUT	6.
REAR KEY BOARD LAYOUT	7.
SYSTEM CONFIGURATION	8.
- Daisy Chained from single port	
- Using a VSD/16 Star Driver	
- Using Multiple Outputs	
KEYBOARD PROGRAMMING	9.
- Main menu	
- PTZ Setup	
- Joystick Calibration	
USER GUIDE	12.
KEYBOARD SPECIFICATION	13.

CAUTION

ELECTROMAGNETIC COMPATIBILITY (EMC)

This is a Class A product, in a domestic environment it may cause radio interference, if this is the case the user may be required to take remedial measures.

MANUFACTURER'S DECLARATION OF CONFORMANCE

A Declaration of Conformity in accordance with the following EU standards has been made and is kept on file at Norbain SD Ltd. Norbain House, Eskdale Road Wokingham, RG41 5TS.

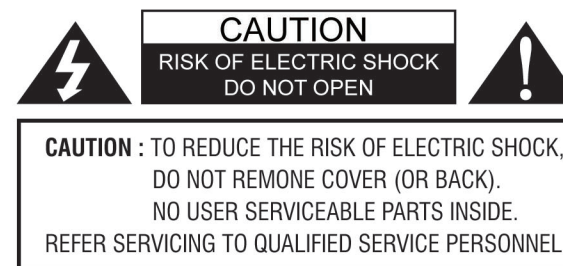
The manufacturer declares that the product supplied with this document is compliant the provisions of the EMC Directive 89/336 EEC, the Low Voltage Directive LVD 73/23, the CE Marking Directive 93/68 EEC, and all associated amendments.

This document is intended to provide accurate information; however, the information contained herein is subject to change without notice Vista, in keeping pace with technological advances, ia a company of product innovation. Therefore, it is difficult to ensure that all information provided is entirely accurate and up-to-date. Vista accepts no responsibility for any inaccuracies or omissions and specifically disclaims any liabilities, loss, or risk, personal or otherwise which is incurred as a consequence, directly or indirectly, of the use and/or application of any of the contents of this document.

Specification subject to change without notice

ELECTRICAL SAFETY

Explanation of electrical safety symbols



The lightning flash with an arrowhead symbol, within an equilateral triangle is intended to alert the user to the presence of uninsulated "dangerous voltage" within the product's enclosure that may be of sufficient magnitude to constitute a risk of electric shock to persons.



The exclamation point within an equilateral triangle is intended to alert the user to the presence of important operating and maintenance (servicing) instructions in the literature accompanying the appliance.

INTRODUCTION

This manual covers the installation, set up and operation of the VKBD1 Vista telemetry control keyboard.

The VKBD1 remote keyboard allows the user to control up to 255 PTZ domes over an RS485 Network. Using either Vista PowerDome or Pelco D or P protocols

Note : This keyboard does not control any DVR functions.

Features:

- Controls 1 – 255 PTZ cameras
- Multiple Protocols including Vista PowerDome ,Pelco D and P
- RS485 Communications
- Built-in 3-Axis joystick
- Built-in 2 line LCD display
- User password protection
- Easy programming
- Programmable transmission speed

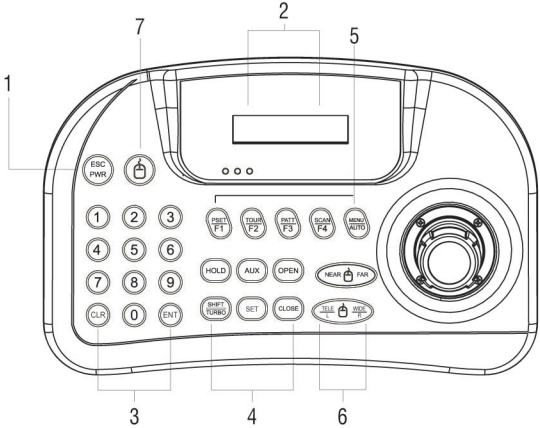
Before Installation

1. This keyboard system must be installed by qualified service and installation personnel
2. Unpack all components and confirm nothing is missing (See packing List)
3. Read instruction in this manual
4. Use wiring configurations shown in this manual

Packing List

1. VKBD1
2. Manual

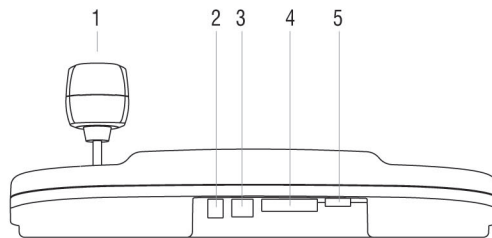
FRONT KEY BOARD LAYOUT



< Figure 1 >

Number	Button	Description
1	ESC/POWER 	Power on and off, press and hold for 3 seconds Escape/ step back with in menu setup
2	LCD DISPLAY 	Displays camera ID, Protocol, Function status, general status and menu functions
3	Numbers 	Camera selection keys, PTZ setup (1+), Main setup (2+)
4	Controller Function keys 	HOLD System Locking (Unlock using 4 digit password). SHIFT/TURBO: Shift for function program, Turbo- High speed. AUX: External equipment on/off SET: PTZ and Main setup OPEN: Iris open CLOSE: Iris close
5	Function keys 	Control of: Presets, Tours, Learn Tours and Auto Pan. Menu is used to access camera menu Function keys are programmable
6	 	Camera Focus control Camera Zoom control

REAR KEY BOARD LAYOUT



< Figure 2 >

Number	Item	Description
1	Joystick	3 Axis Joystickv allows panning, tilting and Zooming of PTZ cameras. Also used to navigate the setup menu structure.
2	DC 12V Input	12V DC 2.1mm Jack plug required (140mA)
3	USB PORT	The USB port is reserved for future development
4	TRx Tx3 Tx2 Tx1 RS-485	RS485 Connector, Use Tx1, 2 or 3 for RS485 connection.
5	Program	This port is for factory use only.

SYSTEM CONFIGURATION

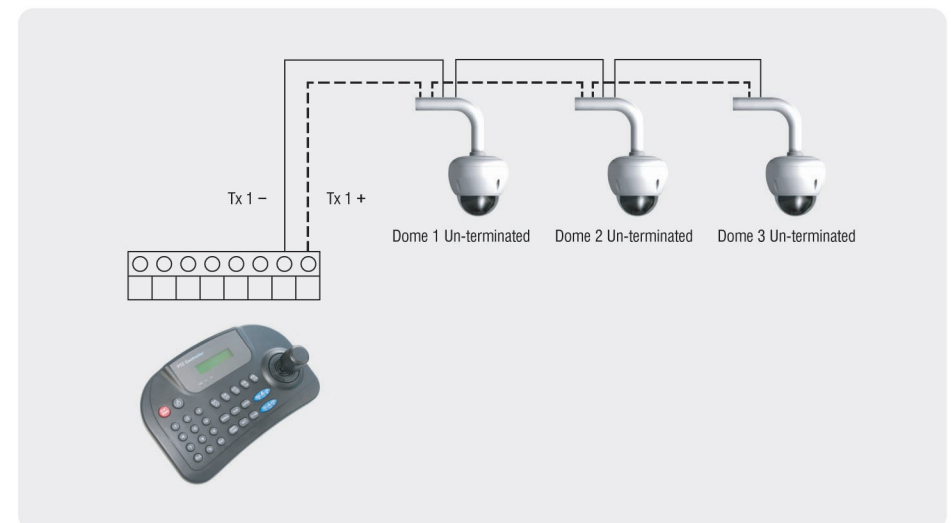
Before operating the domes, ensure that the Protocol, Addresses and Termination are correctly set



Currently the TRx + and - ports are not utilised and are reserved for future development.

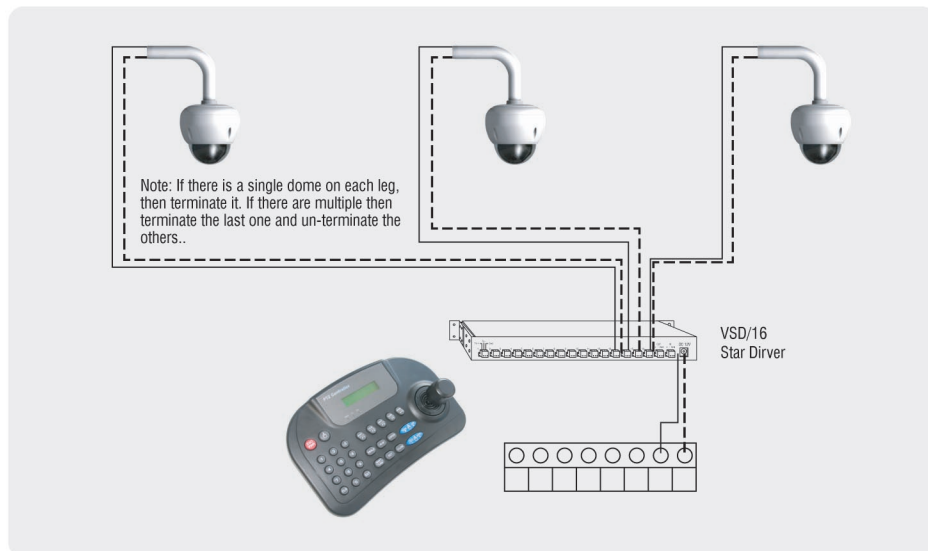
There are two options for wiring configurations from any of the three ports, either Daisy chained or Starred via an RS485 Star Driver, examples below :

Daisy Chained from single port

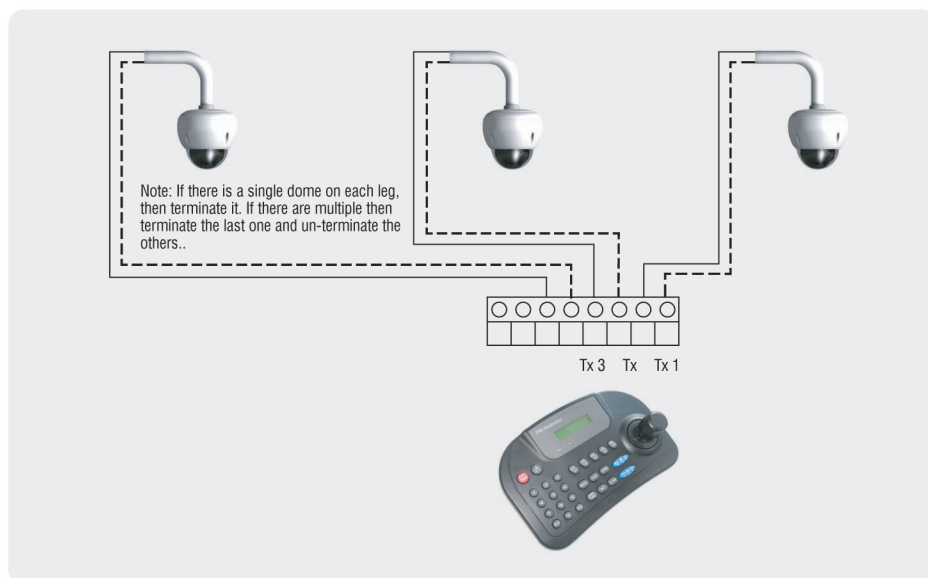


SYSTEM CONFIGURATION

Using a VSD/16 Star Driver



Using Multiple Outputs



KEYBOARD PROGRAMMING

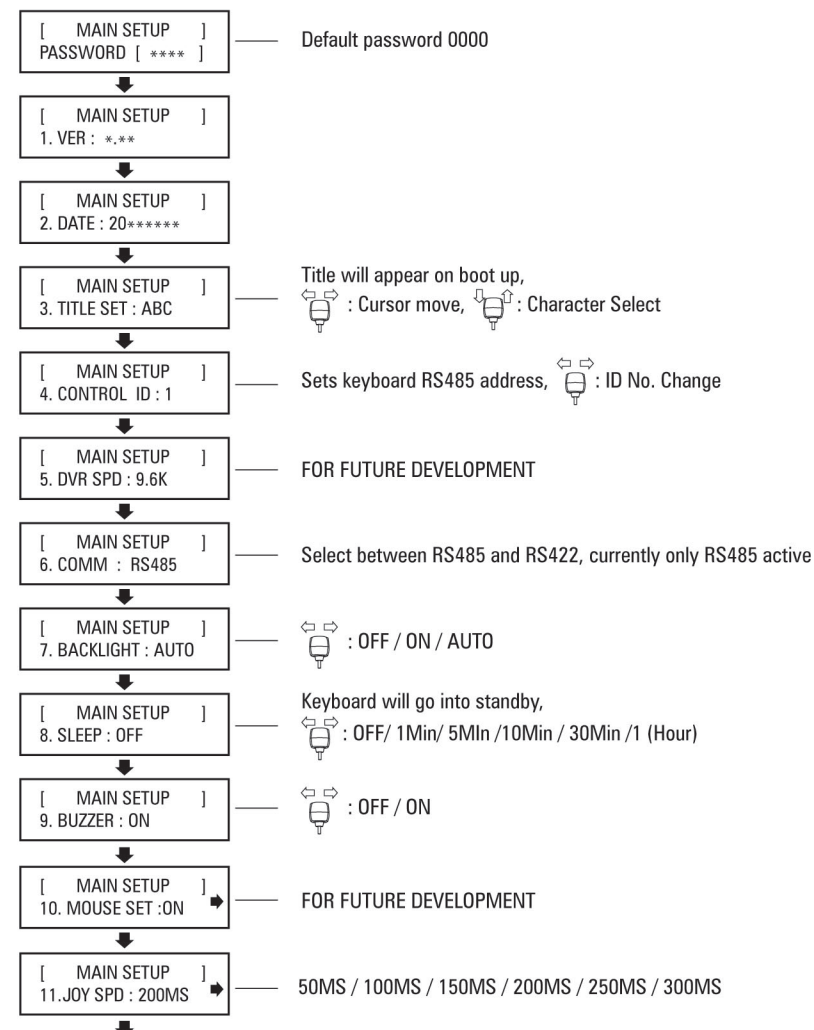
There are two menus to set up within the VKBD1 keyboard:

1. Main menu – this sets up the main functions of the keyboard such as Keyboard address, buzzer etc
2. PTZ menu – This sets up the protocol, baud rate etc.

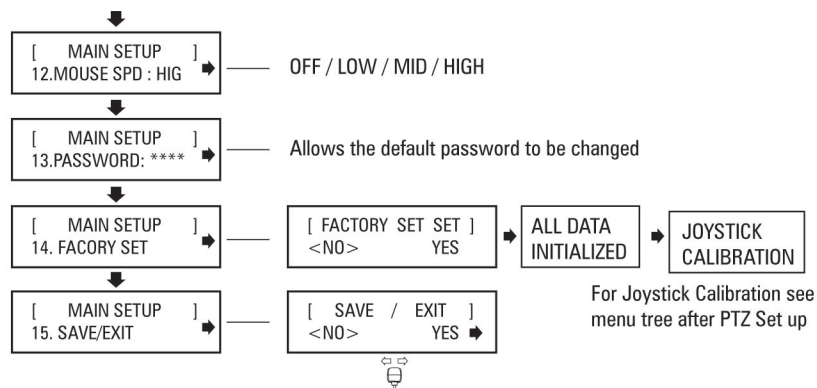
Within both menu structures there are sections not currently used, these are there for future development.

Main menu

This menu is access by pressing **2** and **SET** for 3 seconds, the keyboard will ask for a password, as default this is 0000 (4 zeros)

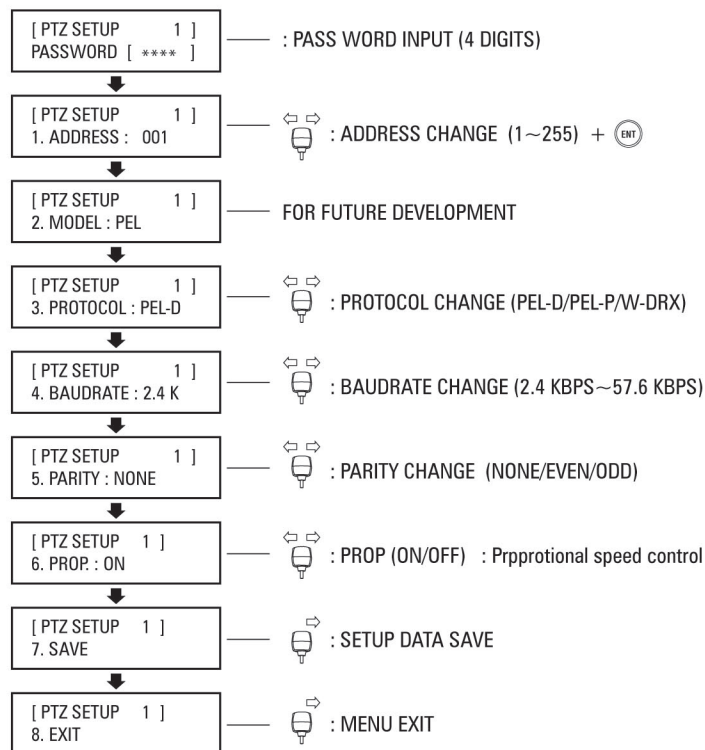


:: KEYBOARD PROGRAMMING



PTZ Setup

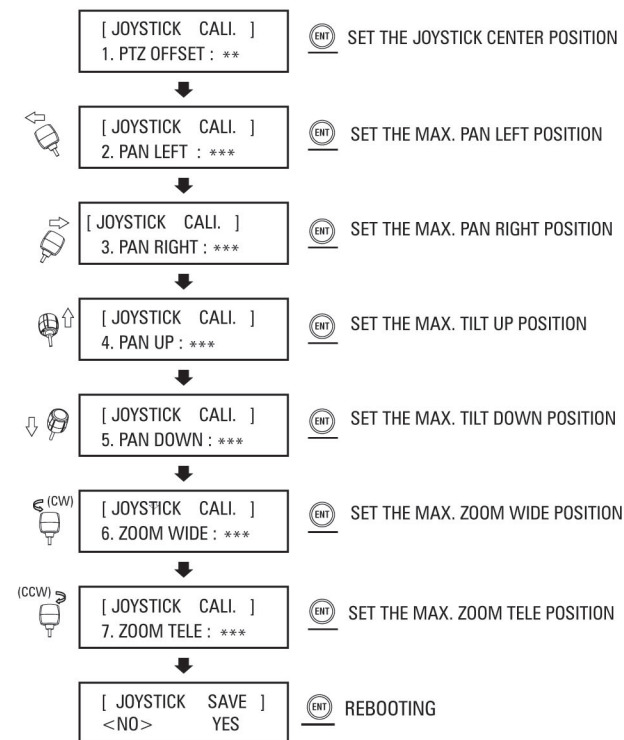
This menu is access by pressing **1** and **SET** for 3 seconds, the keyboard will ask for a password, as default this is 0000 (4 zeros)



:: KEYBOARD PROGRAMMING


Joystick Calibration

This is access by the Factory Reset section of the Main menu or by pressing **3** and **SET**.



:: USER GUIDE

1. Camera Selection

Enter the camera number 1 to 255 followed by .

2. Moving a PTZ camera

Use the Joystick to move Left/Right/Up and Down.


Twist Clockwise to Zoom in.

Twist Anti-Clockwise to Zoom out.

3. Set a Preset Position

Enter preset number followed by  button for 2 seconds.

4. To recall a Preset Position

Enter preset number followed by  button (short press)

5. Set a Learn Tour

Enter the Learn tour number followed by  button for 2 seconds, this will enter the dome menu section for programming a learn tour.

6. To recall a Learn Tour

Enter Learn Tour number followed by  button (short press)

7. Recall a Preset Tour

Enter Preset Tour number followed by  button (short press)

8. Dome Menu

To enter the dome menu press and hold the  button for 2 seconds. To exit menus press ESC or move the joystick to the Left.

:: KEYBOARD SPECIFICATION

General

Description	3 axis PTZ control keyboard for Vista and Pelco RS485 Telemetry
-------------	---

Electrical

Voltage	12VDC or 9V battery powered
Power	Max 140mA

Connectors

Power	2.1mm socket
RS485	8 way terminal block

Controls

Keypad	27 Robust rubber buttons
Joystick	3 Axis variable speed

Physical

Dimensions	280mm(W), 174mm(D), 92mm(H)
Weight	Net 0.7 Kg Gross 1.7Kg

Environmental

Operating Temp	0 - 45 Degrees C
Humidity	10%-70% non-condensing

:: MEMO

:: MEMO