

GHDSMO/S2

COVERT CAMERA

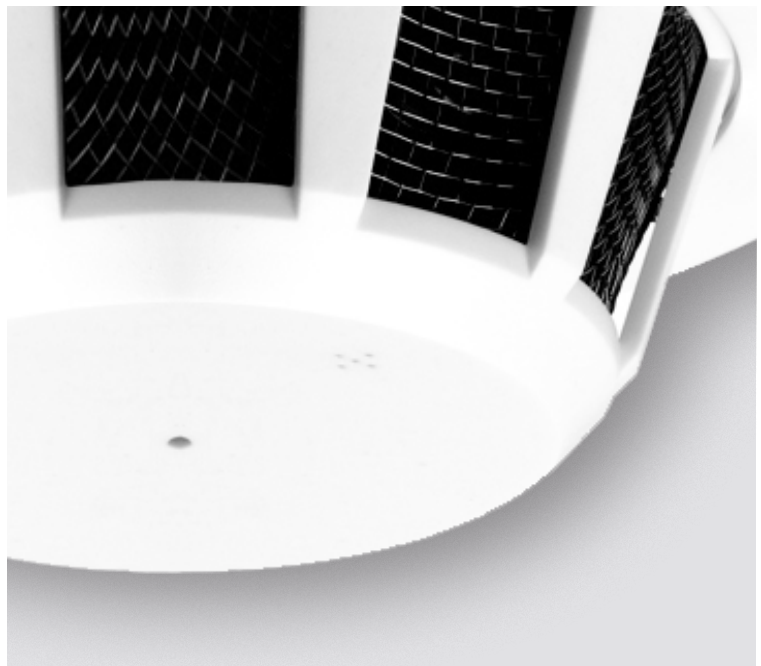
2x 2.1MP AHD Camera in a Smoke Detector Case – Side View



Key Features

- Sony 1/2.9" 2.19MP Progressive Scan CMOS
- 1080p (1920×1080) @ 30 (25)fps
- 4-in-1 output (AVI, TVI, CVI, CVBS)
- Fixed Board Lens
- Mechanical Day&Night
- WDR, 3D DNR, Defog
- UTC function supports OSD Control
- Camera module
- Conical pinhole lens
- Side view
- NDAA compliant

The Genie **GHDSMO/S2** is 2x 2.1MP AHD cameras with a 3.6mm lens inside a smoke detector case, suitable for covert operations.



Specification

Camera

Image Sensor	1/2.9" Progressive Scan CMOS
Resolution	TVI, AVI, CVI : 1080p @ 30(25)fps / 720p @ 60fps (50fps) / 720p @ 30fps (25fps) TV out : CVBS NTSC/PAL
Minimum Illumination	0.2Lux(F1.6, AGC33dB, DSS:x2)
Lens	2x Conical Pinhole Fixed Board Lens, 3.6mm, F 2.0
Angle of View	106.9° (D)x89.7° (H)x47.5° (V)
Shutter Speed	AUTO/FLICKER/MANUAL/ (1/30(25)~1/30,000)
Digital Slow Shutter (DSS)	OFF~ x32
Effective Pixel	1985(H) x 1105(V)
Video Output	AVI, TVI, CVI, CVBS

Others

Power Supply	DC12V(±10%)
Power Consumption	Max.140mA @ DC12V
Temperature Conditions	Operating: -10°C~+50°C Storage: -20°C~+60°C

Functions

White Balance	AUTO/AUTO EXT/PUSH LOCK/MANUAL
WDR/BLC	OFF/BLC/HLC/WDR (4 Zones selectable)
D-WDR	OFF/LOW/MIDDLE/HIGH
Level	132.6dB
Auto Gain Control (AGC)	OFF~45dB
Day & Night	AUTO/COLOUR/B&W (Electronic D&N)
Noise Deduction	3D-DNR(OFF/LOW/MIDDLE/HIGH)
Motion Detection	OFF/ON(4 Zones)
Privacy Mask	16 Zones
Image Rotation	OFF/H-FLIP/V-FLIP/HV-FLIP
Defog	OFF/ON (AUTO/MANUAL)
Sharpness	0~10
OSD Control	UTC
Language	8 languages

Accessories



PSU1SM

DC12V 1A Regulated Switch
Mode Power Supply