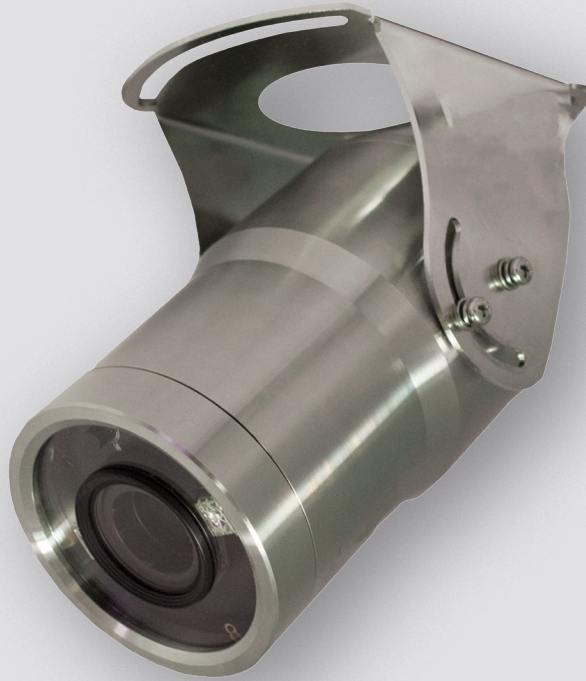


SSIP2B

BULLET CAMERA

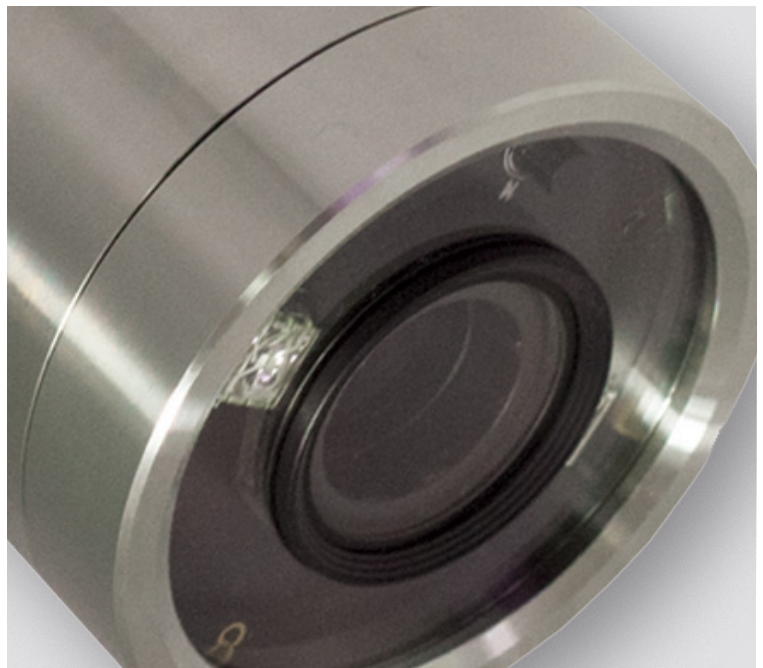
2MP Stainless Steel IP IR Bullet Camera with 3.6mm Lens



Key Features

- 1/2.8" Sony 2MP Starvis image sensor
- 1080p full HD resolution
- 3.6mm fixed lens
- Triple Codec (H.264 / MPEG4 / MJPEG)
- True day & night with ICR mechanism
- D-WDR (Digital Wide Dynamic Range)
- 3DNR (Digital Noise Reduction)
- DC12V / PoE operation
- 316 grade stainless steel housing
- IP67 ingress protection
- Wall mount bracket option
- NDAA compliant

The Genie **SSIP2B** is an IP 2MP bullet camera with a 3.6mm fixed lens. The body is 316 grade stainless steel making this camera an ideal choice for applications in harsh environments.



Specification

Image

Colour Adjust	Bright / Contrast / Saturation / Sharp / Hue
White Balance	Auto / Indoor / Outdoor / Fluorescent
OSD Display	Text, Data, Time, Event, On / Off
Image Mirror	Normal / Mirror (H) / Flip (V) / Both (HV)

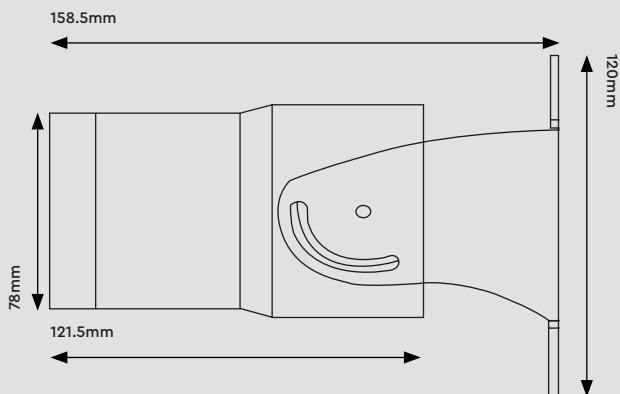
Others

Network Interface Protocol	Onvif Profile S compatible
Ingress Protection	IP67
Power Supply	DC12V +/- 10%
Working Environment	Operating : -10°C +50°C Preservation : -10°C +60°C Humidity : 0%-90%
Dimensions	78 × 158.5 × 120 mm
Weight	1.52 Kg (Approx.)

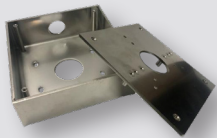
Camera

Image Sensor	Sony 2MP Starvis
Size	1/2.8"
Electronic Shutter	Auto (1/15-1/15000), Suppress rolling, Manual
Scanning System	Progressive scan
Lens	3.6mm fixed lens
Total Pixels	2000 (H) x 1121 (V), 2.24 Mega Pixels
Effective Pixels	1984 (H) x 1105 (V), 2.19 Mega Pixels
Privacy Area	On / Off (6 programmable zone)
Motion Detection	48 Zone, Sensitivity 1-5 Step, On / Off
Day & Night	Auto / Day (Colour) / Night (B&W), ICR control
LPR	Auto 1/15 - 1/1900, On / Off
Wide Dynamic Range	DWDR (1-5 Step) On / Off
3DNR	Digital Noise Reduction 1-63 Step
External Video	VBS 1.0Vp-p

Dimensions



Accessories



SSMPJB

Stainless Steel Multi-Purpose Junction Box