

WBEBVW | WBEBVG

WALL MOUNT BRACKET

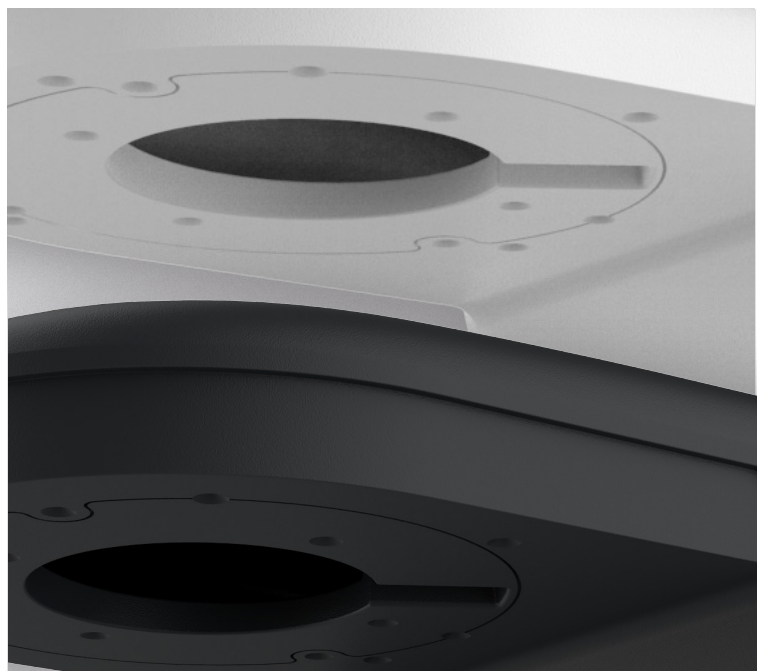
Wall Bracket for Eyeball Cameras



Key Features

- Aluminium alloy material with surface spray treatment
- Dust-proof design
- Wall mount bracket for eyeball cameras

The Genie **WBEBVW** and **WBEBVG** are wall brackets for eyeball cameras in a white or grey finish.



Specification

Material	Aluminium alloy
Colour	White Grey
Working Temperature	-40°C ~ +60°C (-40°F ~ +140°F)
Working Humidity	10% ~ 90%
Load Bearing	The wall must be strong enough to withstand at least 3 times the weight of the camera and the bracket.
Dimensions	129.8 × 154.9 × 74.4 mm
Weight	527g

Dimensions

